

# Investment Data Overview

January 7, 2019



## World Market Overview<sup>1</sup>

	1Yr % Change		1Yr % Change
<b>Americas</b>		<b>Communication Services</b>	<b>-12.19%</b>
Dow Jones	-7.08%	<b>Consumer Discretionary</b>	<b>-1.61%</b>
S&P 500	-7.11%	<b>Consumer Staples</b>	<b>-10.58%</b>
NASDAQ	-4.74%	<b>Energy</b>	<b>-20.49%</b>
Barclays Aggregate	0.54%	<b>Financials</b>	<b>-14.59%</b>
<b>EMEA</b>		<b>Health Care</b>	<b>1.14%</b>
Euro Stoxx 50	-15.95%	<b>Industrials</b>	<b>-16.59%</b>
FTSE 100	-11.87%	<b>Information Technology</b>	<b>-6.72%</b>
CAC 40	-13.79%	<b>Materials</b>	<b>-18.56%</b>
DAX	-19.42%	<b>Utilities</b>	<b>1.84%</b>
<b>Asia/Pacific</b>			
Nikkei	-15.50%		
Hang Seng	-16.16%		

## U.S. Economic Overview<sup>1</sup>

	January 1, 2018		January 7, 2019
<b>U.S. GDP Consensus 2018 Growth</b>	2.6%	↑	2.9%
<b>S&amp;P 500 Current P/E</b>	23.02	↓	17.39
<b>S&amp;P 500 Forward P/E (FY 2019)</b>	18.70	↓	14.9
<b>S&amp;P 500 Earnings Growth (FY 2019)</b>	23.13%		5.50%
<b>10Y U.S. Treasury Yield</b>	2.476%	↑	2.662%

## Number of Civilians Unemployed for 15 Weeks and Over



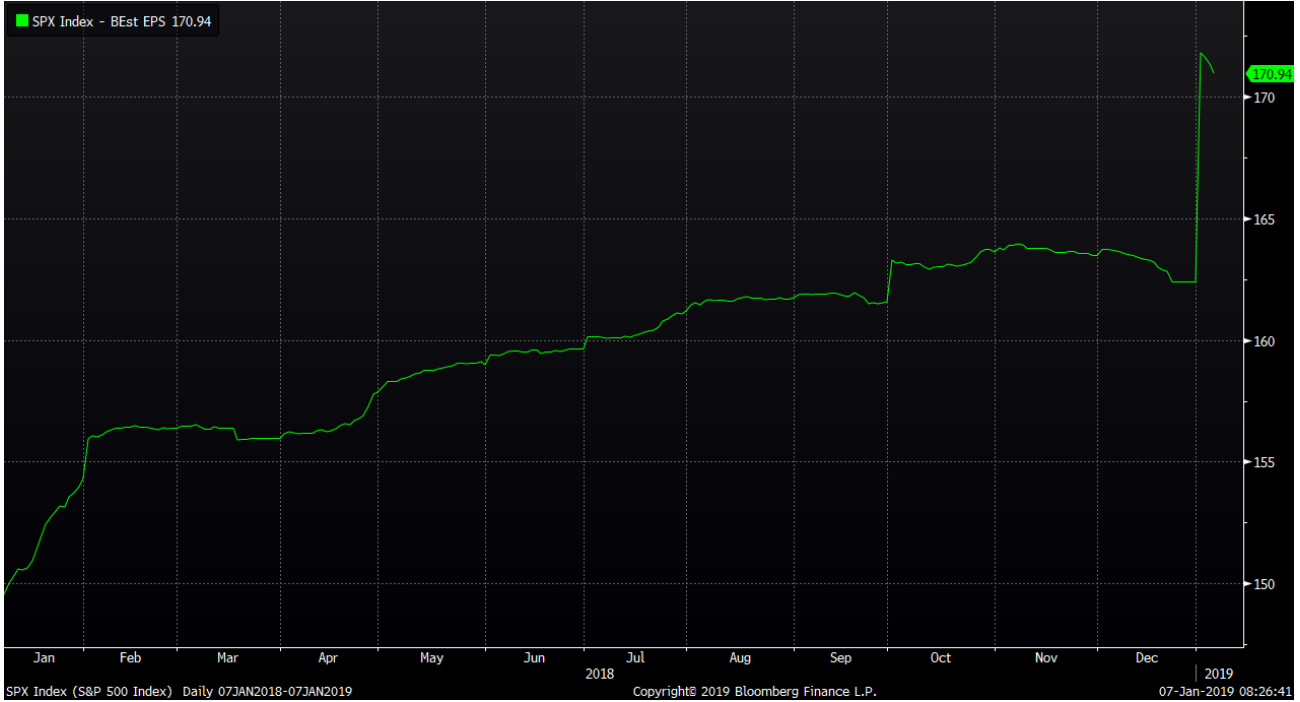
## Recent Earnings Releases<sup>1</sup>

Ticker	Name	Date	Actual	Estimate	Surprise	Guidance	Period
AVGO US	Broadcom Inc	12/6/2018	5.85	5.564	5.10		Q4 18
ADBE US	Adobe Inc	12/13/2018	1.83	1.883	(2.80)	1.87	Q4 18

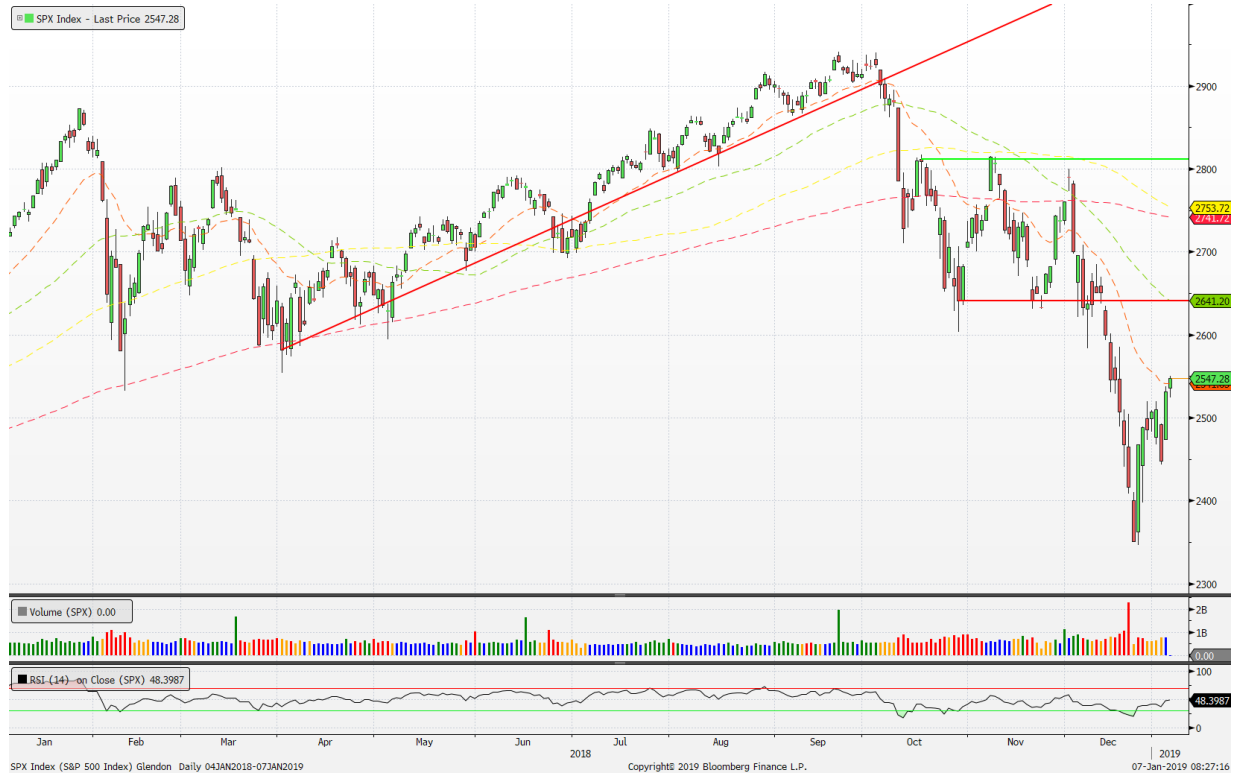
## Upcoming Earnings Releases<sup>1</sup>

Ticker	Name	Date	Date Type	Time	Estimate	Guidance	Period
UNH US	UnitedHealth Group Inc	1/15/2019	C	Bef-mkt	3.214		Q4 18
JPM US	JPMorgan Chase & Co	1/15/2019	C	07:00	2.247		Q4 18
WFC US	Wells Fargo & Co	1/15/2019	C	08:00	1.186		Q4 18
BAC US	Bank of America Corp	1/16/2019	C	06:45	0.644		Q4 18
NFLX US	Netflix Inc	1/17/2019	C	16:00	0.24	0.23	Q4 18
AXP US	American Express Co	1/17/2019	C	Aft-mkt	1.80		Q4 18
JNJ US	Johnson & Johnson	1/22/2019	C	06:45	1.951		Q4 18
UTX US	United Technologies Corp	1/23/2019	C	Bef-mkt	1.527		Q4 18
TXN US	Texas Instruments Inc	1/23/2019	C	16:01	1.235	1.24	Q4 18
ETFC US	E*TRADE Financial Corp	1/24/2019	E		1.023		Q4 18
MSFT US	Microsoft Corp	1/24/2019	E		1.093		Q2 19
UNP US	Union Pacific Corp	1/24/2019	C	08:00	2.02		Q4 18
ISRG US	Intuitive Surgical Inc	1/24/2019	C	Aft-mkt	3.011		Q4 18
INTC US	Intel Corp	1/24/2019	C	Aft-mkt	1.222	1.22	Q4 18
CAT US	Caterpillar Inc	1/28/2019	C		2.987		Q4 18
AMGN US	Amgen Inc	1/29/2019	C		3.271		Q4 18
LMT US	Lockheed Martin Corp	1/29/2019	C		4.385		Q4 18
VZ US	Verizon Communications Inc	1/29/2019	C	07:00	1.088		Q4 18
AAPL US	Apple Inc	1/29/2019	C	16:30	4.17		Q1 19
PYPL US	PayPal Holdings Inc	1/30/2019	E		0.666	0.66	Q4 18
BA US	Boeing Co/The	1/30/2019	C		4.575		Q4 18
MCD US	McDonald's Corp	1/30/2019	C	Bef-mkt	1.884		Q4 18
FB US	Facebook Inc	1/30/2019	C	Aft-mkt	2.193		Q4 18
V US	Visa Inc	1/31/2019	E		1.253		Q1 19
UPS US	United Parcel Service Inc	1/31/2019	E		1.913	1.92	Q4 18
HSY US	Hershey Co/The	1/31/2019	E		1.264		Q4 18
AMZN US	Amazon.com Inc	1/31/2019	E		5.516		Q4 18
ETN US	Eaton Corp PLC	1/31/2019	C	Bef-mkt	1.431	1.43	Q4 18
SHW US	Sherwin-Williams Co/The	1/31/2019	C	Bef-mkt	4.116		Q4 18
XOM US	Exxon Mobil Corp	2/1/2019	C		1.121		Q4 18

# SPX FY18 Estimated Earnings



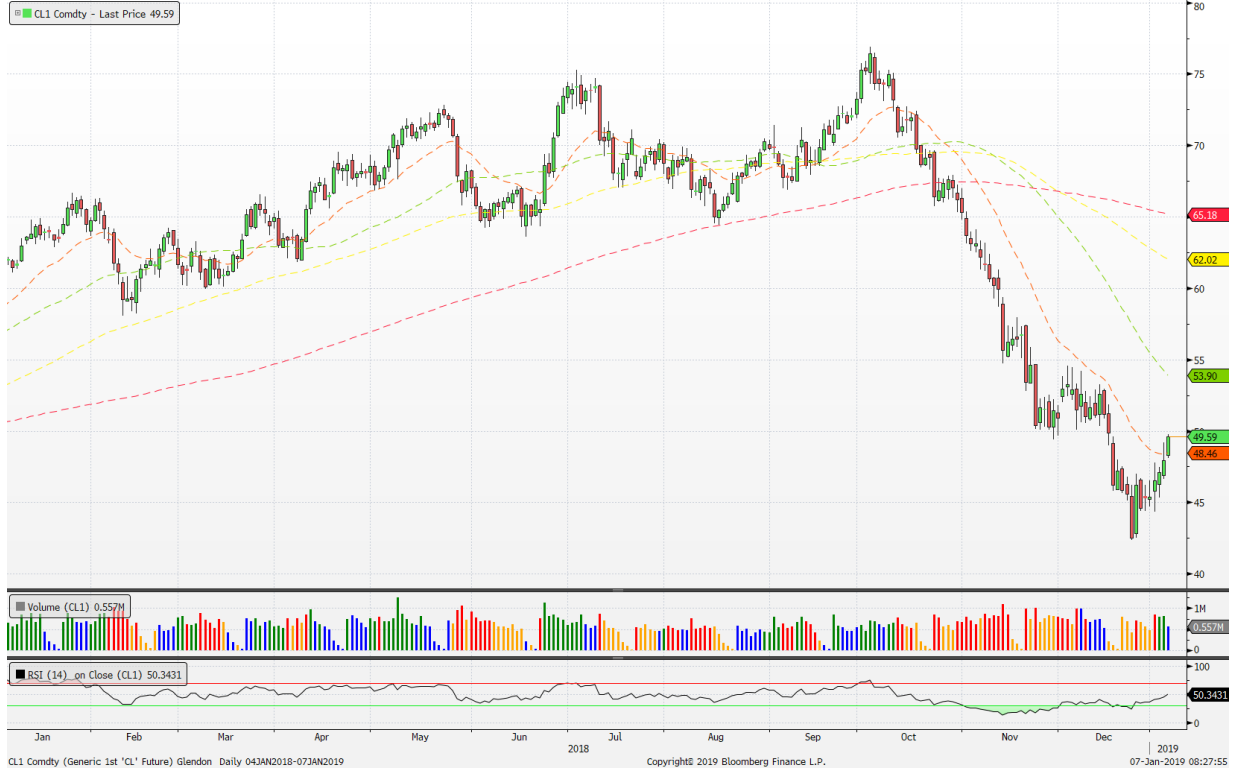
# SPX Technical Overview



# USD Technical Overview



# WTI Crude Technical Overview



# Gold Technical Overview



# High Yield Credit Spread Technical Overview



## TNX Technical Overview

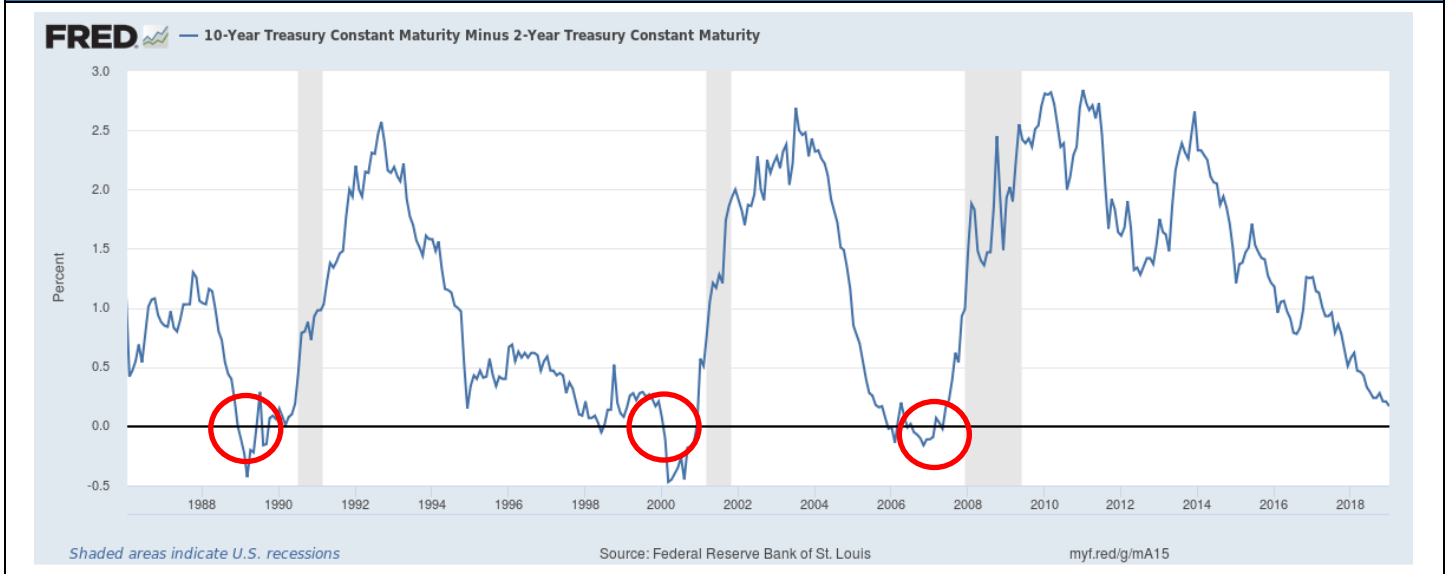


## Approximate\* Model Betas<sup>1</sup>

Model	Description	Beta	Cash
ACTG	Alpha Cubed Tactical Growth	<b>0.70</b>	33.5%
ACFG	Alpha Cubed Focused Growth	<b>0.84</b>	24%
ACQD	Alpha Cubed Quality Dividend	<b>0.82</b>	16%
ACGR	Alpha Cubed Growth	<b>0.83</b>	20%
ACBG	Alpha Cubed Balanced Growth	<b>0.54</b>	15.24%

*\*Your actual portfolio may differ.*

## 10-2Y Treasury Yield Spread



For clarification/more information regarding these charts, please contact us or schedule a meeting.

*This message is intended solely for the use of the individual or entity to which it is addressed. Any distribution or copying of this communication is strictly prohibited. No offer to purchase or sell securities is being made in this communication. Only your official monthly statement can provide accurate information regarding your account. The information set forth herein was obtained from the client and/or sources which we believe reliable, but we do not guarantee its accuracy. Overall account performance cannot and should not be extrapolated from any examples or illustrations given. This material is being provided for information purposes only, and nothing herein constitutes investment, legal, accounting or tax advice, or a recommendation to buy, sell, or hold a security. If you are considered an insider or are subject to specific trading restrictions due to your employment, please let us know in writing as we cannot be held responsible for violations of your employment agreement or any restrictions on trading placed on you by your employer. Always consult with your CPA or Estate Planning Attorney regarding taxes and issues relating to your estate/beneficiaries as we do not provide this type of advice. All investments in the stock market involve risk and can result in permanent loss of principal. Past performance is no guarantee of future results. Alpha Cubed Investments is an independent SEC registered investment advisory company that includes prior firm, TRW Investments, LLC. Effective 12/31/2012, TRW Investments, LLC was dissolved, and the GIPS firm is Alpha Cubed Investments. Alpha Cubed Investments claims compliance with the Global Investment Performance Standards (GIPS). Please contact Christina Walsh, Chief Compliance Officer, for information regarding the firm's list of composite descriptions, performance data, and/or a compliant presentation.*

**Source:** <sup>1</sup>Bloomberg. Accessed January 7, 2019.

**© Alpha Cubed Investments**  
3333 Michelson Dr., Suite 620  
Irvine, CA 92612