

Investment Committee Overview

October 1, 2018 Meeting



World Market Overview¹

	YTD % Change		S&P Sector YTD % Change
Americas		Consumer Discretionary	19.47%
Dow Jones	8.14%	Consumer Staples	-5.53%
S&P 500	9.73%	Energy	5.16%
NASDAQ	17.19%	Financials	-1.24%
Barclays Aggregate	-1.60%	Health Care	15.17%
EMEA		Industrials	3.33%
Euro Stoxx 50	-2.54%	Information Technology	19.52%
FTSE 100	-2.56%	Materials	-4.17%
CAC 40	3.66%	Telecom Services	-3.33%
DAX	-4.57%	Utilities	-0.03%
Asia/Pacific			
Nikkei	6.50%		
Hang Seng	-7.12%		

U.S. Economic Overview¹

	January 1, 2018		October 1, 2018
U.S. GDP Consensus 2018 Growth	2.6%	↑	2.9%
S&P 500 Current P/E	23.02	↓	21.21
S&P 500 Forward P/E (FY 2018)	18.70	↓	18.19
S&P 500 Earnings Growth (FY 2018 from T12M)	23.13%		16.62%
10Y U.S. Treasury Yield	2.476%	↑	3.072%

Number of Civilians Unemployed for 15 Weeks and Over



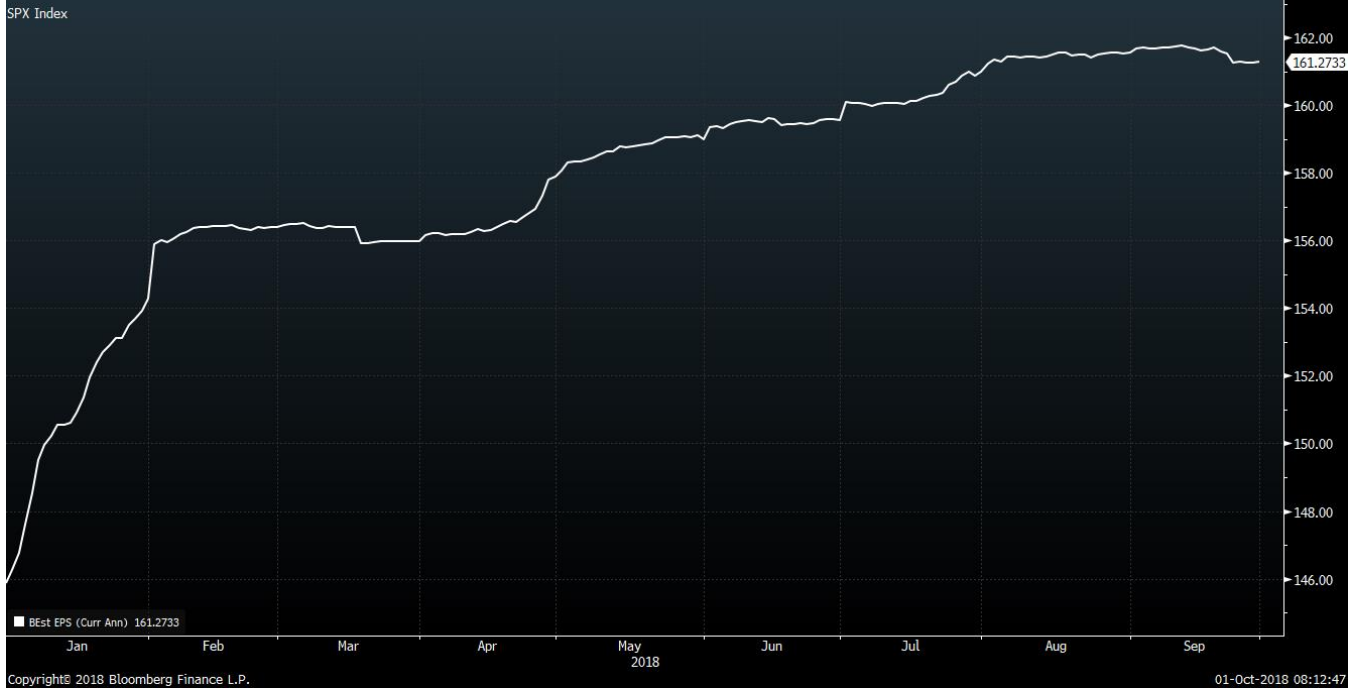
Recent Earnings Releases¹

Ticker	Name	Date	Actual	Estimate	Surprise	Guidance	Period
PANW US	Palo Alto Networks Inc	9/6/2018	1.28	1.164	10.00	1.16	Q4 18
AVGO US	Broadcom Inc	9/6/2018	4.98	4.833	3.00		Q3 18
ADBE US	Adobe Systems Inc	9/13/2018	1.73	1.69	2.40	1.68	Q3 18

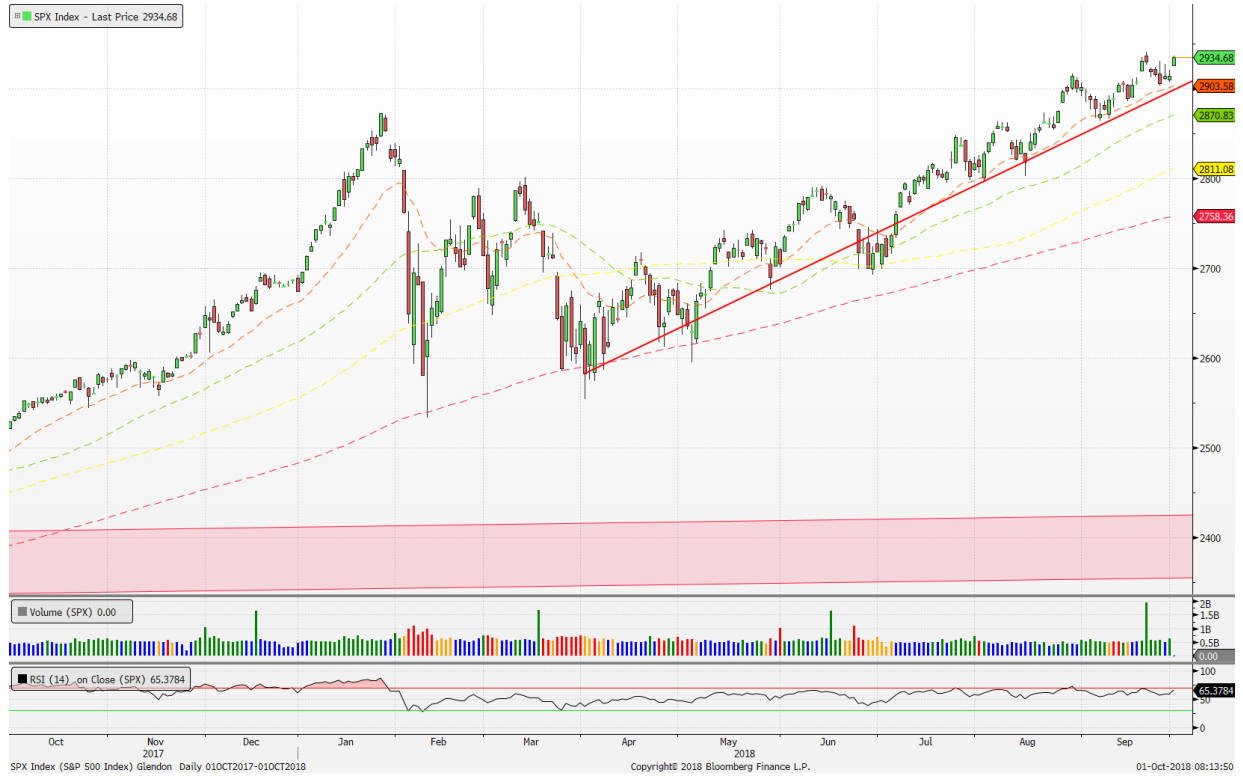
Upcoming Earnings Releases¹

Ticker	Name	Date	Date Type	Time	Estimate	Guidance	Period
JPM US	JPMorgan Chase & Co	10/12/2018	C	06:45	2.278		Q3 18
WFC US	Wells Fargo & Co	10/12/2018	C	08:00	1.179		Q3 18
BAC US	Bank of America Corp	10/15/2018	C	06:45	0.63		Q3 18
UNH US	UnitedHealth Group Inc	10/16/2018	C	Bef-mkt	3.292		Q3 18
LMT US	Lockheed Martin Corp	10/16/2018	E		4.282		Q3 18
JNJ US	Johnson & Johnson	10/16/2018	C	06:45	2.009		Q3 18
GS US	Goldman Sachs Group Inc/The	10/16/2018	C	07:30	5.399		Q3 18
NFLX US	Netflix Inc	10/16/2018	C	16:05	0.682	0.68	Q3 18
URI US	United Rentals Inc	10/17/2018	E		4.595		Q3 18
ETFC US	E*TRADE Financial Corp	10/18/2018	E		0.806		Q3 18
AXP US	American Express Co	10/18/2018	C	Aft-mkt	1.764		Q3 18
UTX US	United Technologies Corp	10/23/2018	E		1.817		Q3 18
AMGN US	Amgen Inc	10/23/2018	E		3.431		Q3 18
MCD US	McDonald's Corp	10/23/2018	C	Bef-mkt	2.003		Q3 18
TXN US	Texas Instruments Inc	10/23/2018	T		1.534	1.52	Q3 18
CAT US	Caterpillar Inc	10/23/2018	C	07:30	2.828		Q3 18
VZ US	Verizon Communications Inc	10/23/2018	C	07:30	1.19		Q3 18
HSY US	Hershey Co/The	10/24/2018	E		1.554		Q3 18
PYPL US	PayPal Holdings Inc	10/24/2018	E		0.542	0.54	Q3 18
V US	Visa Inc	10/24/2018	E		1.195		Q4 18
UPS US	United Parcel Service Inc	10/24/2018	C	07:00	1.818		Q3 18
SHW US	Sherwin-Williams Co/The	10/25/2018	C	Bef-mkt	5.772		Q3 18
MSFT US	Microsoft Corp	10/25/2018	E		0.96		Q1 19
AMZN US	Amazon.com Inc	10/25/2018	E		3.087		Q3 18
INTC US	Intel Corp	10/25/2018	C	Aft-mkt	1.153	1.15	Q3 18
GOOGL US	Alphabet Inc	10/25/2018	C	Aft-mkt	10.494		Q3 18
CMG US	Chipotle Mexican Grill Inc	10/25/2018	C	16:10	1.999		Q3 18
XOM US	Exxon Mobil Corp	10/26/2018	E		1.264		Q3 18
ETN US	Eaton Corp PLC	10/30/2018	E		1.429	1.40	Q3 18
KO US	Coca-Cola Co/The	10/30/2018	C	06:55	0.551		Q3 18
FB US	Facebook Inc	10/31/2018	E		1.483		Q3 18
ICE US	Intercontinental Exchange Inc	10/31/2018	C	07:30	0.804		Q3 18
AAPL US	Apple Inc	11/1/2018	E		2.765		Q4 18
DWDP US	DowDuPont Inc	11/1/2018	C	08:00	0.719		Q3 18
BRK/A US	Berkshire Hathaway Inc	11/2/2018	E		3,788.988		Q3 18

SPX FY18 Estimated Earnings



SPX Technical Overview



USD Technical Overview



WTI Crude Technical Overview



Gold Technical Overview



High Yield Credit Spread Technical Overview



TNX Technical Overview



Approximate* Model Betas

Model	Description	Beta	Cash
ACTG	Alpha Cubed Tactical Growth	0.92	14.5%
ACFG	Alpha Cubed Focused Growth	0.92	22%
ACQD	Alpha Cubed Quality Dividend	0.87	16%
ACGR	Alpha Cubed Growth	0.9	19%
ACBG	Alpha Cubed Balanced Growth	0.55	12.24%

**Your actual portfolio may differ.*

10-2Y Treasury Yield Spread



For clarification/more information regarding these charts, please contact us or schedule a meeting.

Alpha Cubed Investments, LLC (ACI) is a Registered Investment Adviser. This brochure is solely for informational purposes. Advisory services are only offered to clients or prospective clients where ACI and its representatives are properly licensed or exempt from licensure. Past performance is no guarantee of future returns. Investing involves risk and possible loss of principal capital. No advice may be rendered by ACI unless a client service agreement is in place.

Historical performance results for investment indices and/or benchmarks have been provided for general comparison purposes only. Beta is the measure of a fund's volatility relative to the market. (Almost all fund managers correlate themselves to the S&P 500). A beta of greater than 1.0 indicates that the fund is more volatile than the market, and less than 1.0 is less volatile than the market. An index is a composite of securities that provides a benchmark for performance. Each index's total return includes changes in price and reinvestment of any dividends or interest paid by the securities over the period indicated. Indices are unmanaged and do not reflect the payment of advisory fees and other expenses associated with an investment in a mutual fund. Investors cannot invest directly in an index (although there are investment vehicles that historically have closely approximated the composition and performance of many indices). A benchmark is a standard against which the performance of a security, mutual fund or investment manager can be measured. Generally, broad market and market-segment stock and bond indexes are used for this purpose. Our firm may also utilize a "blended" index which is composed of two or more indices that are weighted to more closely resemble the composition of a portfolio. The information set forth herein was obtained from sources which we believe reliable, but we do not guarantee its accuracy. For more information about an index or indices used in this report, please contact us.

Source: ¹Bloomberg. Accessed October 1, 2018.

© Alpha Cubed Investments
3333 Michelson Dr., Suite 620
Irvine, CA 92612