

# Investment Data Overview

July 2, 2018



## World Market Overview<sup>1</sup>

|                     | YTD % Change |                               | S&P Sector YTD % Change |
|---------------------|--------------|-------------------------------|-------------------------|
| <b>Americas</b>     |              | <b>Consumer Discretionary</b> | <b>10.81%</b>           |
| Dow Jones           | -2.12%       | <b>Consumer Staples</b>       | <b>-9.93%</b>           |
| S&P 500             | 1.38%        | <b>Energy</b>                 | <b>5.27%</b>            |
| NASDAQ              | 8.66%        | <b>Financials</b>             | <b>-4.91%</b>           |
| Barclays Aggregate  | -1.62%       | <b>Health Care</b>            | <b>0.99%</b>            |
| <b>EMEA</b>         |              | <b>Industrials</b>            | <b>-5.60%</b>           |
| Euro Stoxx 50       | -3.46%       | <b>Information Technology</b> | <b>10.17%</b>           |
| FTSE 100            | -1.49%       | <b>Materials</b>              | <b>-4.04%</b>           |
| CAC 40              | -0.47%       | <b>Telecom Services</b>       | <b>-10.81%</b>          |
| DAX                 | -4.86%       | <b>Utilities</b>              | <b>-1.52%</b>           |
| <b>Asia/Pacific</b> |              |                               |                         |
| Nikkei              | -4.19%       |                               |                         |
| Hang Seng           | -3.22%       |                               |                         |

## U.S. Economic Overview<sup>1</sup>

|  | January 1, 2018 |   | July 2, 2018 |
|--|-----------------|---|--------------|
| <b>U.S. GDP Consensus 2018 Growth</b>        | 2.6%            | ↑ | 2.9%         |
| <b>S&amp;P 500 Current P/E</b>               | 23.02           | ↓ | 20.66        |
| <b>S&amp;P 500 Forward P/E (FY 2018)</b>     | 18.70           | ↓ | 17.02        |
| <b>S&amp;P 500 Earnings Growth (FY 2018)</b> | 23.13%          | ↓ | 21.38%       |
| <b>10Y U.S. Treasury Yield</b>               | 2.476%          | ↑ | 2.857%       |

## Number of Civilians Unemployed for 15 Weeks and Over



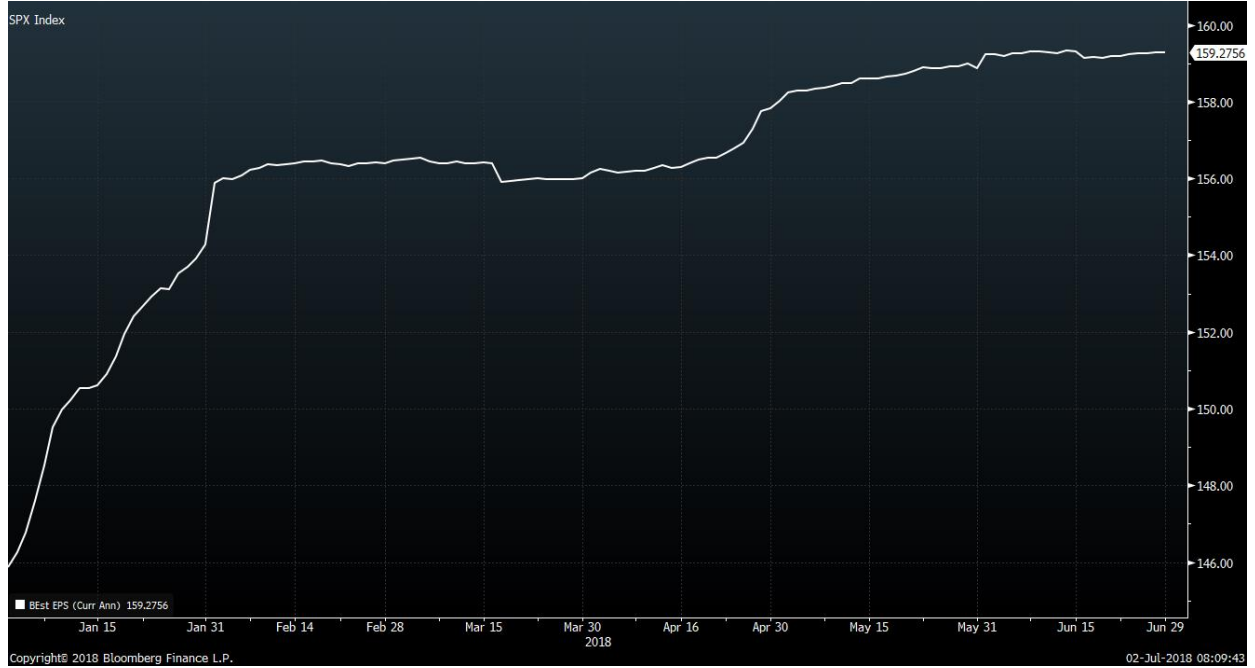
## Recent Earnings Releases<sup>1</sup>

| Ticker  | Name              | Date      | Actual | Estimate | Surprise | Guidance | Period |
|---------|-------------------|-----------|--------|----------|----------|----------|--------|
| AVGO US | Broadcom Inc      | 6/7/2018  | 4.88   | 4.677    | 4.30     |          | Q2 18  |
| ADBE US | Adobe Systems Inc | 6/14/2018 | 1.66   | 1.542    | 7.70     | 1.53     | Q2 18  |

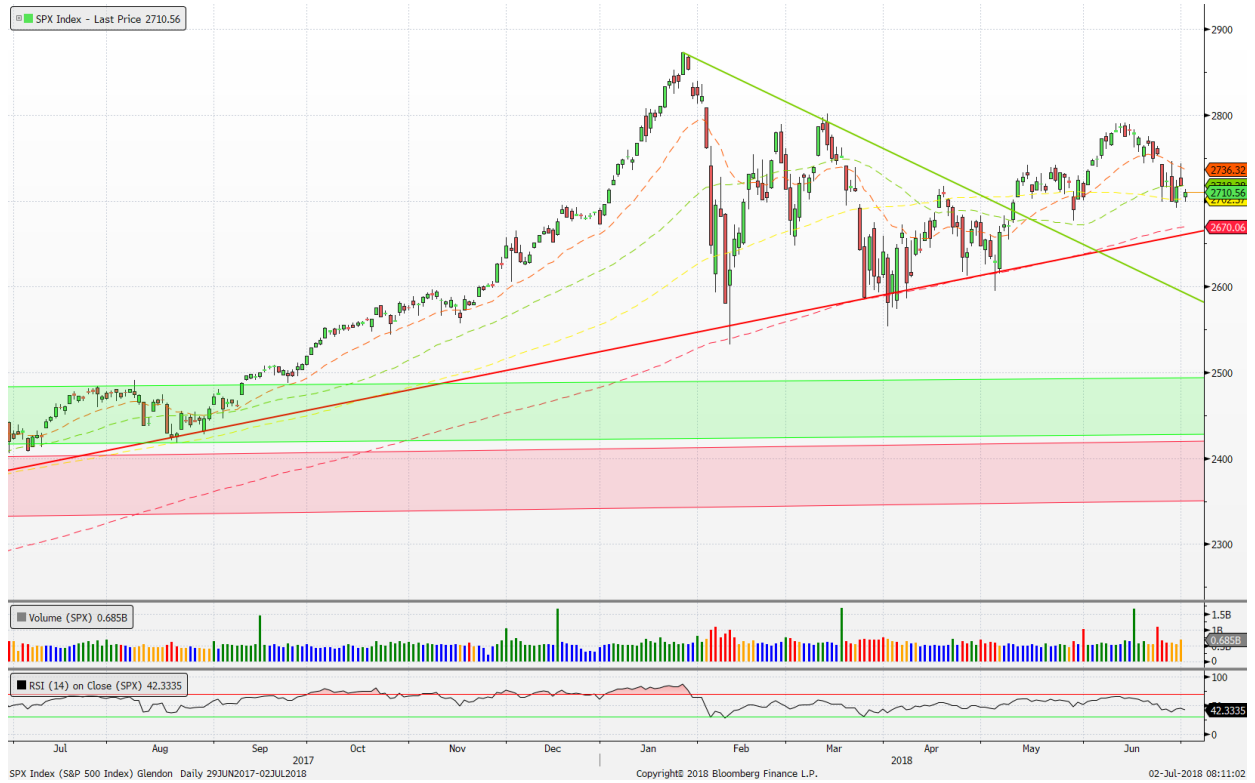
## Upcoming Earnings Releases<sup>1</sup>

| Ticker   | Name                          | Date      | Date Type | Time    | Estimate  | Guidance | Period |
|----------|-------------------------------|-----------|-----------|---------|-----------|----------|--------|
| JPM US   | JPMorgan Chase & Co           | 7/13/2018 | C         | 07:00   | 2.221     |          | Q2 18  |
| WFC US   | Wells Fargo & Co              | 7/13/2018 | C         | 08:00   | 1.121     |          | Q2 18  |
| NFLX US  | Netflix Inc                   | 7/16/2018 | C         | 16:05   | 0.798     | 0.79     | Q2 18  |
| UNH US   | UnitedHealth Group Inc        | 7/17/2018 | C         | Bef-mkt | 3.02      |          | Q2 18  |
| JNJ US   | Johnson & Johnson             | 7/17/2018 | C         | 06:45   | 2.062     |          | Q2 18  |
| GS US    | Goldman Sachs Group Inc/The   | 7/17/2018 | C         | 07:30   | 4.558     |          | Q2 18  |
| URI US   | United Rentals Inc            | 7/18/2018 | E         |         | 3.414     |          | Q2 18  |
| AXP US   | American Express Co           | 7/18/2018 | C         | Aft-mkt | 1.818     |          | Q2 18  |
| ETFC US  | E*TRADE Financial Corp        | 7/19/2018 | E         |         | 0.876     |          | Q2 18  |
| PYPL US  | PayPal Holdings Inc           | 7/19/2018 | E         |         | 0.563     | 0.55     | Q2 18  |
| MSFT US  | Microsoft Corp                | 7/19/2018 | C         | 16:09   | 1.078     |          | Q4 18  |
| GOOGL US | Alphabet Inc                  | 7/23/2018 | C         | Aft-mkt | 9.584     |          | Q2 18  |
| LMT US   | Lockheed Martin Corp          | 7/24/2018 | E         |         | 3.911     |          | Q2 18  |
| UTX US   | United Technologies Corp      | 7/24/2018 | E         |         | 1.841     |          | Q2 18  |
| SHW US   | Sherwin-Williams Co/The       | 7/24/2018 | C         | Bef-mkt | 5.66      |          | Q2 18  |
| VZ US    | Verizon Communications Inc    | 7/24/2018 | C         | 07:30   | 1.149     |          | Q2 18  |
| TXN US   | Texas Instruments Inc         | 7/24/2018 | C         | 16:00   | 1.303     | 1.29     | Q2 18  |
| KO US    | Coca-Cola Co/The              | 7/25/2018 | C         | 06:55   | 0.604     |          | Q2 18  |
| V US     | Visa Inc                      | 7/25/2018 | C         | Aft-mkt | 1.092     |          | Q3 18  |
| WDC US   | Western Digital Corp          | 7/26/2018 | E         |         | 3.514     | 3.45     | Q4 18  |
| AMZN US  | Amazon.com Inc                | 7/26/2018 | E         |         | 2.488     |          | Q2 18  |
| UPS US   | United Parcel Service Inc     | 7/26/2018 | C         |         | 1.923     |          | Q2 18  |
| AMGN US  | Amgen Inc                     | 7/26/2018 | C         |         | 3.539     |          | Q2 18  |
| MCD US   | McDonald's Corp               | 7/26/2018 | C         |         | 1.933     |          | Q2 18  |
| INTC US  | Intel Corp                    | 7/26/2018 | C         | Aft-mkt | 0.96      | 0.99     | Q2 18  |
| CMG US   | Chipotle Mexican Grill Inc    | 7/26/2018 | C         | 16:10   | 2.752     |          | Q2 18  |
| XOM US   | Exxon Mobil Corp              | 7/27/2018 | E         |         | 1.251     |          | Q2 18  |
| CAT US   | Caterpillar Inc               | 7/30/2018 | C         | 07:30   | 2.727     |          | Q2 18  |
| SMG US   | Scotts Miracle-Gro Co/The     | 7/31/2018 | E         |         | 2.605     |          | Q3 18  |
| ETN US   | Eaton Corp PLC                | 7/31/2018 | E         |         | 1.323     | 1.30     | Q2 18  |
| AAPL US  | Apple Inc                     | 7/31/2018 | E         |         | 2.155     |          | Q3 18  |
| FB US    | Facebook Inc                  | 8/1/2018  | E         |         | 1.719     |          | Q2 18  |
| ATVI US  | Activision Blizzard Inc       | 8/2/2018  | E         |         | 0.364     | 0.46     | Q2 18  |
| ICE US   | Intercontinental Exchange Inc | 8/2/2018  | C         | 07:30   | 0.877     |          | Q2 18  |
| DWDP US  | DowDuPont Inc                 | 8/2/2018  | C         | 08:00   | 1.296     |          | Q2 18  |
| BRK/A US | Berkshire Hathaway Inc        | 8/3/2018  | E         |         | 3,339.478 |          | Q2 18  |

# SPX Operating Earnings per Share



# SPX Technical Overview



# USD Technical Overview



# WTI Crude Technical Overview



## Gold Technical Overview



## High Yield Credit Spread Technical Overview



## TNX Technical Overview

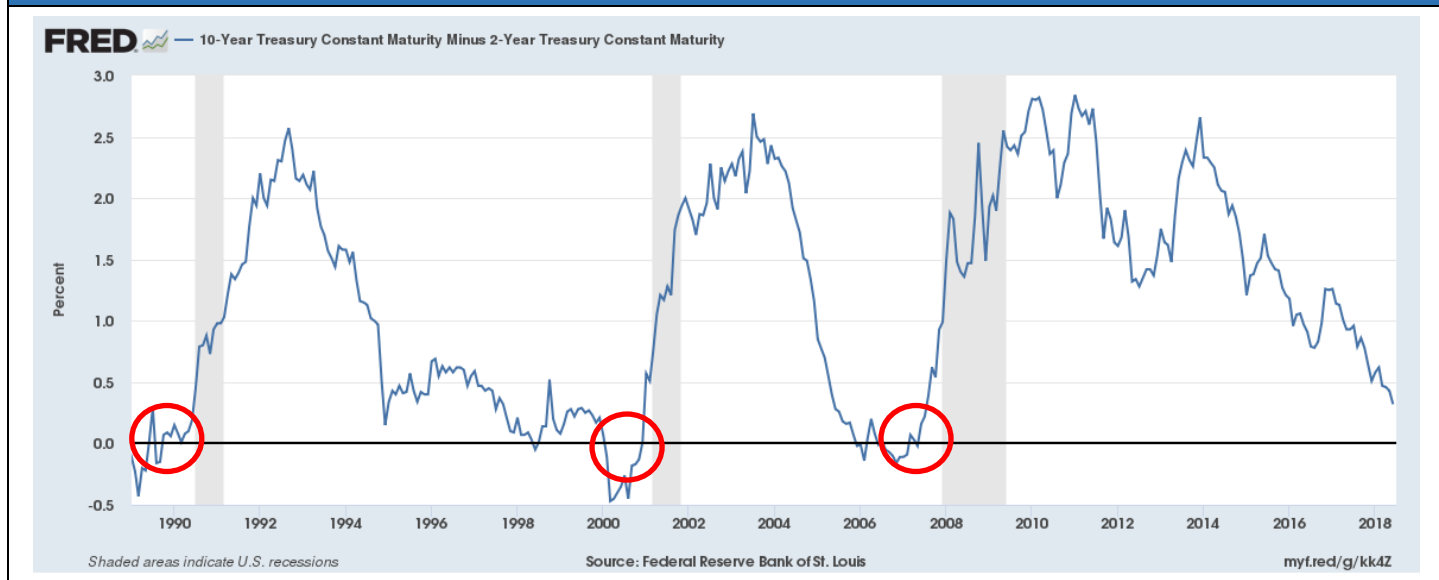


## Approximate\* Model Betas

| Model | Description                  | Beta        | Cash   |
|-------|------------------------------|-------------|--------|
| ACTG  | Alpha Cubed Tactical Growth  | <b>0.88</b> | 19.5%  |
| ACFG  | Alpha Cubed Focused Growth   | <b>0.86</b> | 22%    |
| ACQD  | Alpha Cubed Quality Dividend | <b>0.92</b> | 12%    |
| ACGR  | Alpha Cubed Growth           | <b>0.89</b> | 17%    |
| ACBG  | Alpha Cubed Balanced Growth  | <b>0.56</b> | 10.24% |

*\*Your actual portfolio may differ.*

## 10-2Y Treasury Yield Spread



For clarification/more information regarding these charts, please contact us or schedule a meeting.

*Alpha Cubed Investments, LLC (ACI) is a Registered Investment Adviser. This brochure is solely for informational purposes. Advisory services are only offered to clients or prospective clients where ACI and its representatives are properly licensed or exempt from licensure. Past performance is no guarantee of future results, and political and economic risks may lead to significant losses, including complete loss, for investors.. No advice may be rendered by ACI unless a client service agreement is in place. Please refer to the firm's ADV for more information.*

*Historical performance results for investment indices and/or benchmarks have been provided for general comparison purposes only. Beta is the measure of a fund's volatility relative to the market. (Almost all fund managers correlate themselves to the S&P 500). A beta of greater than 1.0 indicates that the fund is more volatile than the market, and less than 1.0 is less volatile than the market. An index is a composite of securities that provides a benchmark for performance. Each index's total return includes changes in price and reinvestment of any dividends or interest paid by the securities over the period indicated. Indices are unmanaged and do not reflect the payment of advisory fees and other expenses associated with an investment in a mutual fund. Investors cannot invest directly in an index (although there are investment vehicles that historically have closely approximated the composition and performance of many indices). A benchmark is a standard against which the performance of a security, mutual fund or investment manager can be measured. Generally, broad market and market-segment stock and bond indexes are used for this purpose. Our firm may also utilize a "blended" index which is composed of two or more indices that are weighted to more closely resemble the composition of a portfolio. The information set forth herein was obtained from sources which we believe reliable, but we do not guarantee its accuracy. For more information about an index or indices used in this report, please contact us.*

**Source:** <sup>1</sup>Bloomberg. Accessed July 2, 2018.

**© Alpha Cubed Investments**  
3333 Michelson Dr., Suite 620  
Irvine, CA 92612